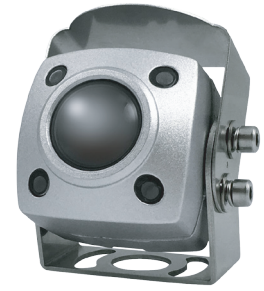


# CV-CC2150 Series

## Side/Rear Vision Camera



- Easy installation
- High performance digital image sensor
- IP68 / IP69K weather-proof
- Vibration-proof
- Low power consumption
- IR LED irradiation distance is up to 7 meter
- Low illumination request under 0.1Lux

### Specifications

Model	CV-CC2150	CV-CC215H	CV-CC215FH
Image Sensor	Pixelplus 1/3"	1/3"	Sony 1/2.9"
Effective Pixel	756(H) x 504(V)	1280(H) x 960(V) approx. 1.27Mpixels	1985(H) x 1105(V) approx. 2.19Mpixels
Dynamic Range	62.9 dB	82 dB	-
SNR	47.1 dB	44 dB	50 dB
HDR(WDR)	No	DWDR	-
AHD Version	-	AHD2.0	
Signal Sync	Internal Sync.		
Video System	NTSC / PAL	AHD2.0	
Resolution	600TV Line	720P	1080P
Output I/F	Composite 1.0 Vp-p / 75 ohm		
Lens Focal / F No.	2.1 mm / F2.0		2.5 mm / F2.0
Lens Resolution	1.3M	2M	
Lens View Angle (FOV)	H:130° V:105° D:171°	H:130° V:73° D:149°	H:120° V:81° D:166°
IR LED	7M (MAX)		
Microphone	No		
Video Mirror	Setting by factory		
Fish eye correction (de-warping)	No		
Power Source	DC12V ± 10%		
Power Consumption	1.8W(MAX)		
Operation Temperature / Humidity	-20°C ~ 70°C		
Stock Temperature / Humidity	-40°C ~ 85°C		
Water-proof	IP68 / IP69K		
Anti-vibration	ISO16750-3 4.1.3.2.3		
Dimension	45.4(W) x 45.4(H) x 53(D)mm		
Weight	NW: 190g GW: 280g		
Connector	6 pin mini-din		

